

# SHIELDING

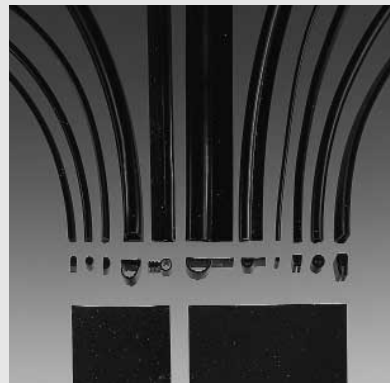
## CARBON RUBBER

CARBON RUBBER is a carbon filled silicone rubber available in the form of sheet as well as various extruded shapes as shown here.

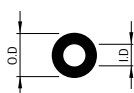
CARBON RUBBER is a good shielding material and an excellent environmental seal.

### Material specifications

Material: conductive silicone (black)  
 Continuous use temperature range: -6~200°C  
 Hardness: 60±5 (JISA) JIS C2123  
 Tensile Strength: >50 kg/cm<sup>2</sup> JIS C2123  
 Tensile elongation: >200% JIS C2123  
 Volume resistivity: 5~10 Ω · cm  
 Flammability: UL94V-0

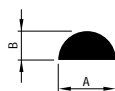


### „O“ Section



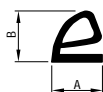
Part No.	O.D	I.D
CSR-O-25-15	2.5	1.5
CSR-O-60-30	6.0	3.0
CSR-O-65-30	6.5	3.0
CSR-O-100-65	10.0	6.5

### „D“ Section



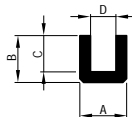
Part No.	A	B
CSR-D-40-15	4.0	1.5
CSR-D-45-25	4.5	2.5

### „Q“ Section



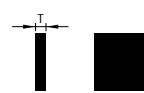
Part No.	A	B
CSR-Q-100-100	10.0	10.0
CSR-Q-127-130	12.7	13.0

### „U“ Section



Part No.	A	B	C	D
CSR-U-48-48	4.8	4.8	3.2	1.6
CSR-U-55-110	5.5	11.0	8.0	2.5
CSR-U-80-130	8.0	13.0	9.5	3.5
CSR-U-95-130	9.5	13.0	9.5	5.0

### Sheet



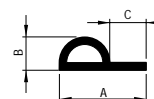
Part No.	Thickness	Dimension
CSR-S-20	2 mm	300 mm x 300 mm
CSR-S-10	1 mm	50 mm x 50 mm
CSR-S-15	1.5 mm	80 mm x 50 mm 80 mm x 25 mm

### Round Section



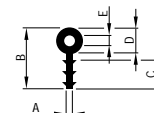
Part No.	D
CSR-R-15	1.5
CSR-R-20	2.0
CSR-R-30	3.0
CSR-R-40	4.0
CSR-R-60	6.0

### „P“ Section



Part No.	A	B	C
CSR-P-125-50	12.5	5.0	6.0
CSR-P-170-72	17.0	7.2	7.5
CSR-P-240-77	24.0	7.7	11.0

### „B“ Section



Part No.	A	B	C	D	E
CSR-B-25-120	2.5	12.0	5.0	6.5	5.0